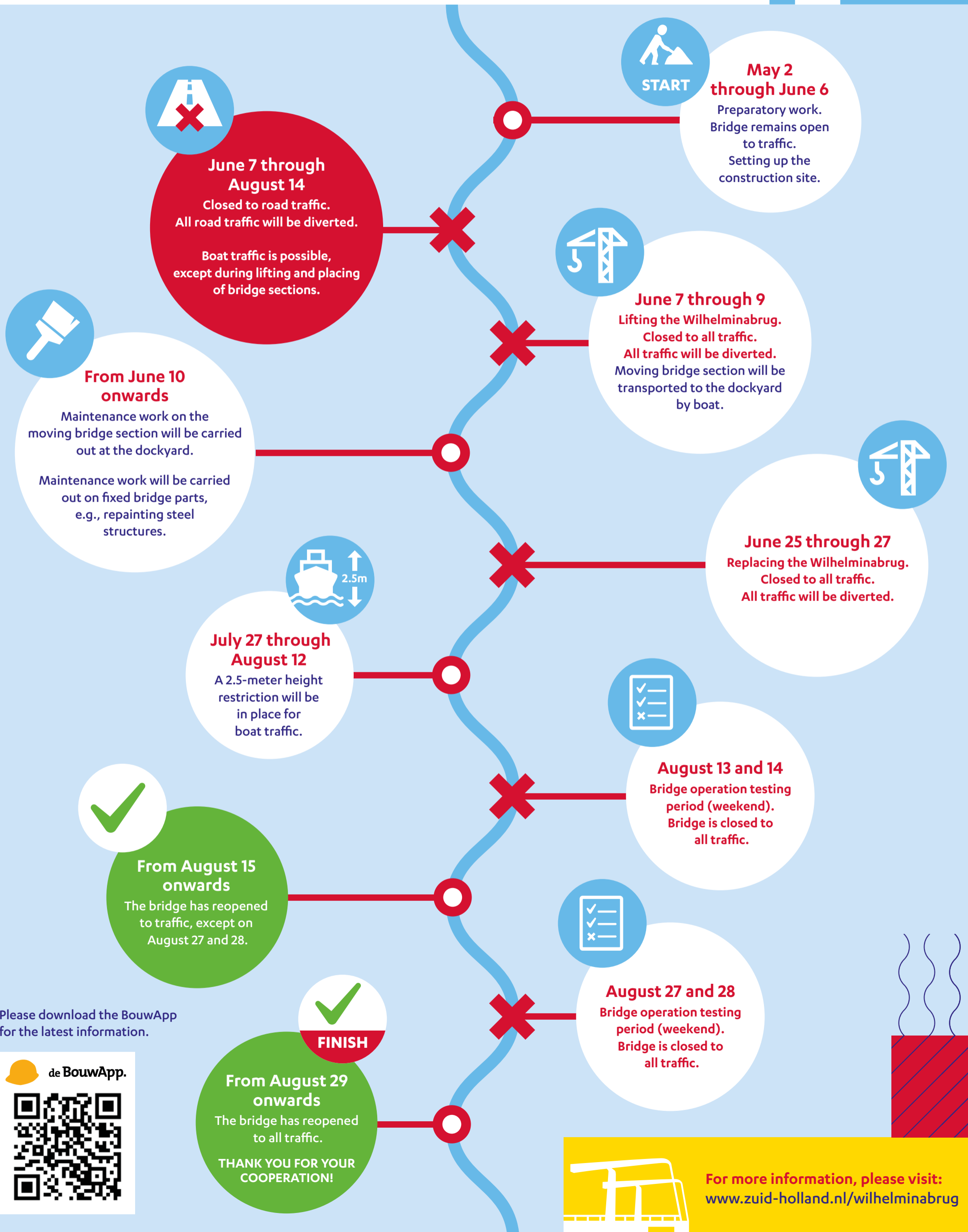




# Large-scale maintenance Wilhelminabrug in Leiden

Bridge will be closed to road traffic  
from June 7 through August 14 2022



**START**

**May 2 through June 6**  
Preparatory work.  
Bridge remains open to traffic.  
Setting up the construction site.



**June 7 through August 14**  
Closed to road traffic.  
All road traffic will be diverted.  
  
Boat traffic is possible, except during lifting and placing of bridge sections.



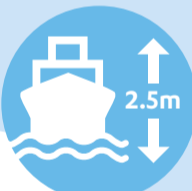
**June 7 through 9**  
Lifting the Wilhelminabrug.  
Closed to all traffic.  
All traffic will be diverted.  
Moving bridge section will be transported to the dockyard by boat.



**From June 10 onwards**  
Maintenance work on the moving bridge section will be carried out at the dockyard.  
  
Maintenance work will be carried out on fixed bridge parts, e.g., repainting steel structures.



**June 25 through 27**  
Replacing the Wilhelminabrug.  
Closed to all traffic.  
All traffic will be diverted.



**July 27 through August 12**  
A 2.5-meter height restriction will be in place for boat traffic.



**August 13 and 14**  
Bridge operation testing period (weekend).  
Bridge is closed to all traffic.



**From August 15 onwards**  
The bridge has reopened to traffic, except on August 27 and 28.



**August 27 and 28**  
Bridge operation testing period (weekend).  
Bridge is closed to all traffic.



**From August 29 onwards**  
The bridge has reopened to all traffic.  
  
**THANK YOU FOR YOUR COOPERATION!**

Please download the BouwApp for the latest information.

de BouwApp.



For more information, please visit:  
[www.zuid-holland.nl/wilhelminabrug](http://www.zuid-holland.nl/wilhelminabrug)